





**Protect your house
with the best
possible security,
with optimised
ease of use.
X MODE M2.0 is the
solution**



The perfect balance between style, design and leading-edge technology, the M2.0 interfaces with a range of home automation systems.

Ensure that the security of your home is always under control.

With X MODE M2.0, you can enjoy the utmost security in the utmost style!

MAXIMUM SECURITY WITH MAXIMUM STYLE

Interchangeable with most mechanical locks

ON REQUEST: ambidextrous anti-burglary locking system with electronic sensor **PATENTED** to avoid false moves in the absence of the cylinder

Ambidextrous lock

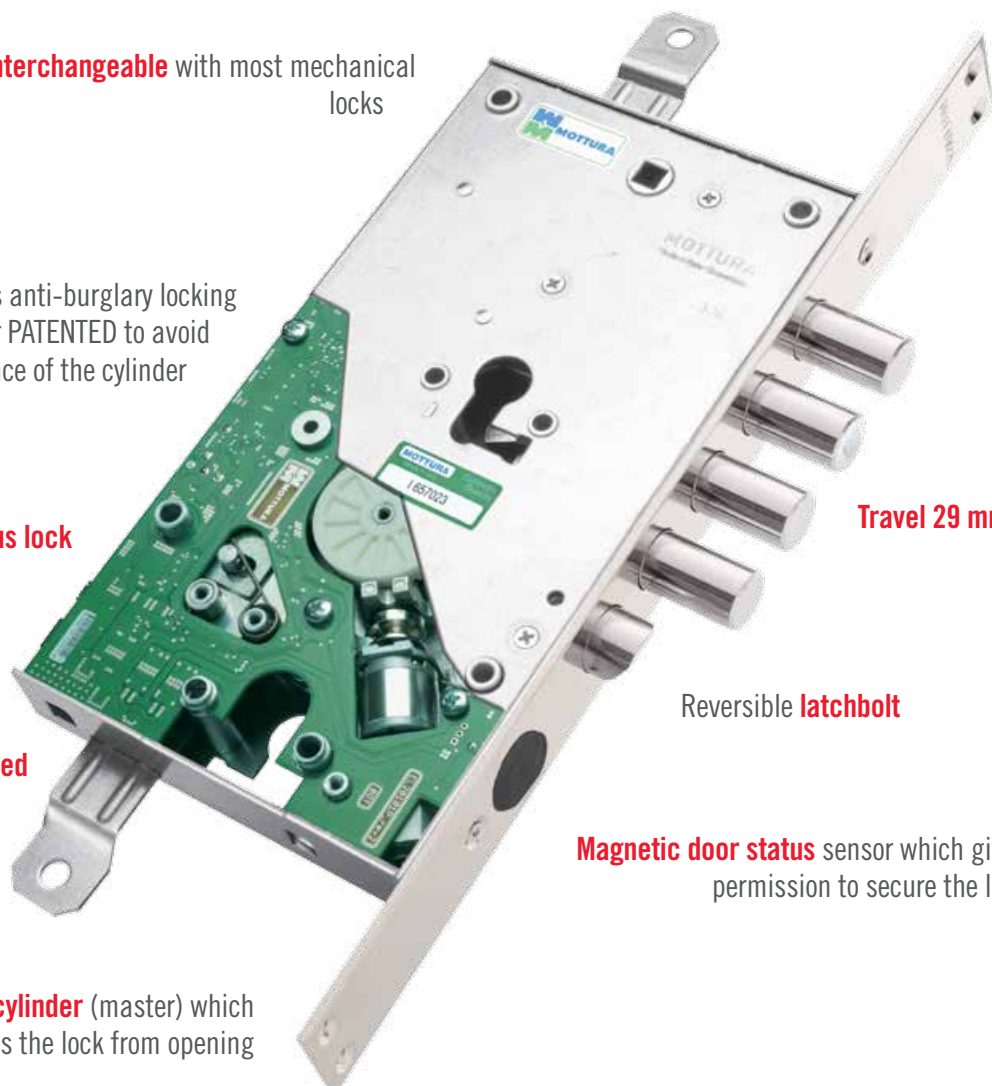
Travel 29 mm

Mains or battery powered

Reversible **latchbolt**

Magnetic door status sensor which gives permission to secure the lock

Possibility of inserting a second cylinder (master) which prevents the lock from opening



ALTERNATIVES INTERNAL ESCUTCHEON

ALTERNATIVES EXTERNAL ESCUTCHEON



Internal escutcheon with colour display for keeping an eye on all phases of programming, directly on the colour screen.



Internal escutcheon for programming the various functions of the lock and door opening systems.



External escutcheon with transponder reader which prevents users having to rely on old-fashioned, inconvenient bunches of keys.



Backlit external escutcheon with keypad and transponder reader for guaranteeing access with a PIN that you alone know, or with a simple swipe of a TAG key.

From today, SECURITY and COMFORT are one and the same: your locking system is now a "friendly" device, enhanced with an extensive range of functions.

Discover the new X MODE M2.0.

10

Exclusive advantages and patented solutions



EASY OPENING

The X MODE M2.0 opens from the outside with a simple swipe of your TAG key, or by typing the PIN code into the keypad, meaning you can get rid of that old, bulky set of keys.

You can choose between card, key, or integrated cylinder key.

The remote control home automation system allows you to connect from various peripheral devices (including alarm systems, card readers and fingerprint readers).



SAFE AND SOUND, JUST AS YOU LIKE IT. NOW EVEN MORE SECURE!

Safe as houses: the opening code is unique, and by law, cannot be copied by third parties.

An even safer version of the key can now be purchased or copied (protected key version) from Mottura Serrature S.p.A., through authorised Mottura Club centres and only with the card which contains the system number.

You can choose from unique keys or a master system with identical keys in order to allow for the opening of locks installed on other doors (e.g. in offices or in the community) with a single key.

MORE THAN ONE ACCESS FOR MORE THAN ONE PERSON (MASTER AND SERVICE KEYS)

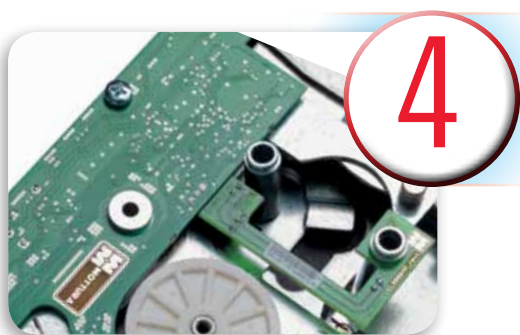
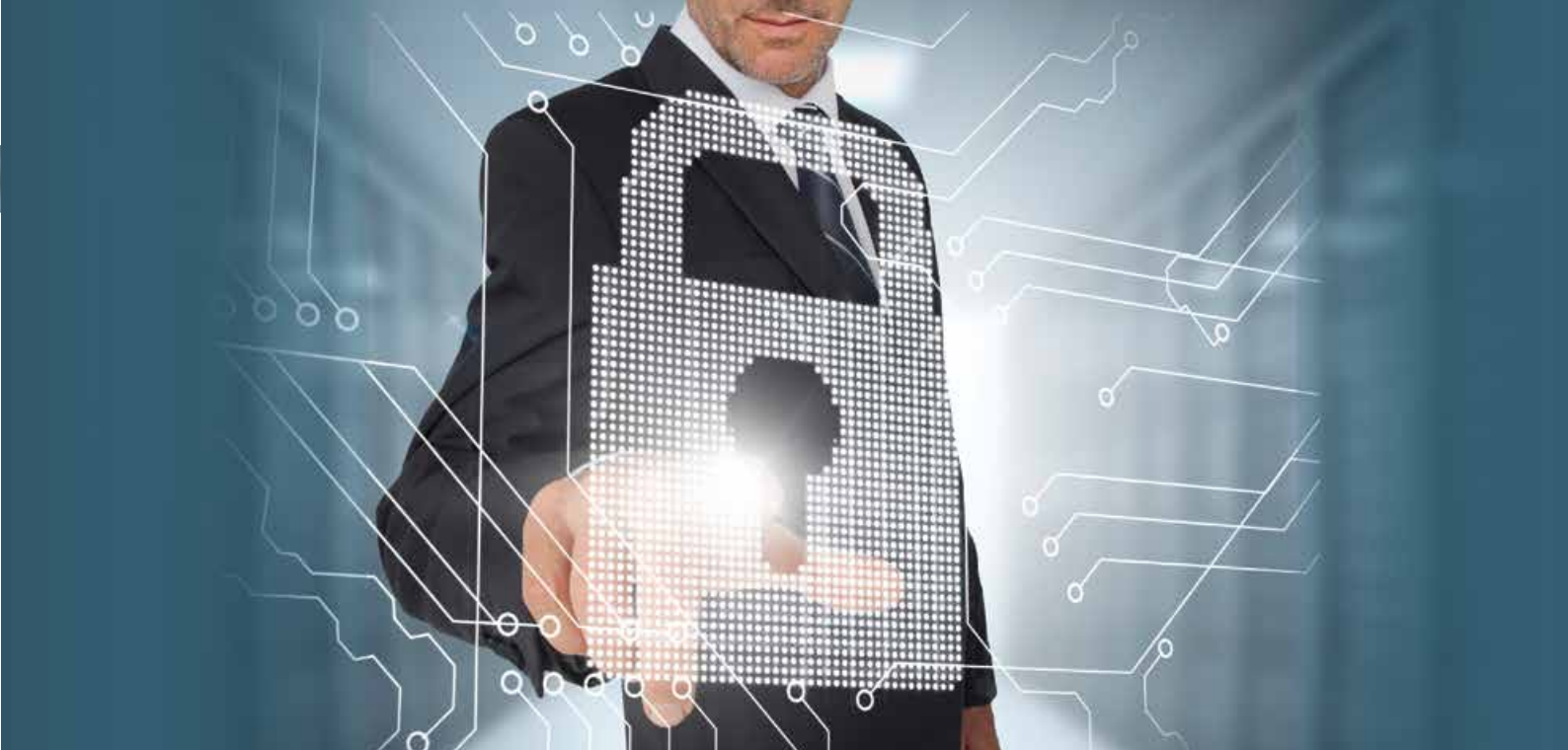


Master keys and service keys in total safety and security.

Master keys can be cancelled (for example in case of theft), while service keys can either be cancelled or simply suspended (for example in case of owner absence). Thanks to the new internal escutcheon with colour display, users can programme access within time windows (only in key protected versions); the same escutcheon can provide information on the status of the door, along with a range of other innovative functions.


X MODE M2.0 allows you to manage access with total peace of mind, with the possibility of applying latch retainer locking in time slots.

Furthermore, users can input a parental code on the internal escutcheon, in order to prevent children inside from opening the door to strangers.



4

ANTI-BURGLARY SAFETY

The X MODE M2.0 has an internal mechanical device (optional) with an ambidextrous trap which is engaged if an attempt is made to remove the cylinder. The same optional version also includes a **PATENTED** electronic cylinder detection device, to prevent accidental activation of the trap during installation or maintenance. **T** 



5

OPEN ANYWAY

The transponder case contains a key in the form of a keyring, to open the door manually, in case of battery or power failure.



6

EASY EVEN IN THE DARK

The external keypad is backlit; users simply press any button to illuminate it, facilitating PIN input even in the dark. This escutcheon allows users to select a PIN of between 3 and 8 figures. This is safe and secure, because the PIN codes are contained within the motherboard and not within the keypad, preventing break ins in cases where the keypad itself is removed from the door.



EASY PROGRAMMING

Programming of the X MODE M2.0 is performed directly through the interior displays, with no need to activate other mechanical lock elements, which means that this can easily be carried out according to individual needs.

The lock is supplied as standard, with automatic installation (the lock closes automatically when the door is shut), but can be changed in the latch retainer version (the lock closes the latch bolt only), manual latchbolt (the lock only electronically opens and closes the bolts, the latchbolt must be operated separately - either manually or with the handle) and open-close (the transponder card must be scanned from the outside, to both open and close the lock).



ALL OF THE POWER SOURCES YOU COULD WISH FOR

X MODE M2.0 can be powered:

- exclusively through non-rechargeable batteries
- exclusively through mains power
- through mains and + non-rechargeable backup batteries
- through mains and + rechargeable backup batteries



SAFE, ADVANCED WRONG CODE LOCKING

After 10 incorrect key readings, the X MODE M2.0 is locked for a predetermined time and emits an audible signal

After 5 incorrect pin inputs, the system is locked for a predetermined time, preventing other codes from being entered and activating an audible signal.



ELECTRONIC SECURITY AGAINST BURGLARY ATTEMPTS

If an attempt is made to remove the external cover to short circuit the power supply wires, the system cancels the effect of the attempt.

Thanks to the remote control device that sends a encrypted rolling code signal to the lock, any attempt to short-circuit any connection cable would have no effect.

THE FEATURES OF THE X MODE M2.0

	PROTECTED KEY VERSION	FREE KEY VERSION
Key purchase at Mottura or Mottura Club dealers		●
Key duplication at authorised Mottura Club centres	●	
Identical key master systems	●	
Access controlled within time windows with display escutcheon	●	
Integrated latch retainer locking in time slots with display escutcheon	●	●
Integrated parental code function for protecting children	●	●
Automatic locking provision, variable in latch retainer, manual latchbolt and open-close versions	●	●
Wrong code locking	●	●
Complies with UNI EN 14846	●	●
Escutcheons in various finishes	●	●
Variable quantities of keys available for each individual system	255	200
Variable quantities of key codes available for each individual system	100	100
Powered by non-rechargeable batteries, mains, mains + non-rechargeable backup batteries, mains + rechargeable backup batteries	With various accessories	With various accessories
Option of connecting to home automation networks (GEWISS, BTICINO, VIMAR, etc.) or anti-burglary system	With accessory (99.684)	With accessory (99.684)
Option of connecting to external peripherals (remote button, card reader, print reader, etc.)	With accessory (99.701)	With accessory (99.701)
Option of electronics mounted outside lock	Optional	Optional
Cylinder extraction protection	Optional	Optional

REMOTE LOCK CONTROL

The X MODE M2.0 can be connected to a home automation network (GEWISS, BTICINO, VIMAR, etc.) via the remote control (optional) to check the status of the door and a range of other useful information for the security of your home.

Or, more simply, the lock can be directly connected to your anti-burglary system.

If the door in question is an entrance door to multiple properties, remote connection offers an additional guarantee: thanks to the encrypted signal, it prevents the lock from opening if an attempt is made to short-circuit the wires present to the side of the door.



HOME AUTOMATION SYSTEM PLAN



49.M01W8/7...

X MODE M2.0 FOR REVERSIBLE RIM LOCKS FREE DUPLICATION KEY

Lock with BATTERY or MAINS function, complete with electronic board inside lock.
Bolt centre distances in mm 28 (49M01W8...) /37 (49M01W7...)

Pack:

1 lock, 1 magnet, 1 board-internal escutcheon connection cable, 1 board-external escutcheon connection cable.

49.M03W8/7...



X MODE M2.0 FOR REVERSIBLE RIM LOCKS WITH PROTEC DUPLICATION KEYS

Lock with BATTERY or MAINS function, complete with electronic board inside lock.
Bolt centre distances in mm 28 (49.M03W8...) /37 (49M03W7...)

Pack:

1 lock, 1 magnet, 1 board-internal escutcheon connection cable, 1 board-external escutcheon connection cable, 1 ownership card.

49.M21W8/7...

X MODE M2.0 FOR REVERSIBLE MORTISE-TYPE LOCKS FREE DUPLICATION KEY

Lock with BATTERY or MAINS function
complete with electronic board inside lock.
Bolt centre distances in mm 28 (49M21W8...) /37 (49M21W7...)

Pack:

1 lock, 1 magnet, 1 board-internal escutcheon connection cable,
1 board-external escutcheon connection cable.



49.M23W8/7...



X MODE M2.0 FOR REVERSIBLE MORTISE-TYPE LOCKS PROTECTED DUPLICATION KEY

Lock with BATTERY or MAINS function, complete with electronic board inside lock.
Bolt centre distances in mm 28 (49M23W8...) /37 (49M23W7...)

Pack:

1 lock, 1 magnet, 1 board-internal escutcheon connection cable, 1 board-external escutcheon connection cable, 1 ownership card.



99.685XX

INTERNAL ESCUTCHEON (65 x 90 mm.)

Central body in black finish, membrane keypad, 4 LED lights and treated metal escutcheon.

Finishes:

BR bronze CR chrome OT brass PV gold PVD coating
AA anodized silver CS satin chrome



99.686XX

EXTERNAL ESCUTCHEON WITH BACKLIT KEYPAD AND TRANSPONDER READER (65 x 90 mm)

Central body in black finish, membrane keypad, 3 LED lights and treated metal escutcheon.

Finishes:

BR bronze CR chrome OT brass PV gold PVD coating
AA anodized silver CS satin chrome



99.687XX

EXTERNAL ESCUTCHEON WITH TRANSPONDER READER (65 x 90 mm)

Central body in black finish, 3 LED lights and treated metal escutcheon.

Finishes:

BR bronze CR chrome OT brass PV gold PVD coating
AA anodized silver CS satin chrome



99.688XX

INTERNAL ESCUTCHEON WITH COLOUR DISPLAY (65 x 90 mm.)

Central body in black finish, OLED 1.69" colour display resolution 160 x 128, 2 LED lights and treated metal escutcheon.

Finishes:

BR bronze CR chrome OT brass PV gold PVD coating
AA anodized silver CS satin chrome

Available from June 2014



95.423XX

INTERNAL/EXTERNAL ESCUTCHEON FOR CYLINDER (65 x 90 mm.)

Central body in black finish with treated metal escutcheon.

Finishes:

BR bronze CR chrome OT brass PV gold PVD coating
AA anodized silver CS satin chrome



95.424XX

EXTERNAL ESCUTCHEON WITH 50 MM HOLE. (65 x 90 mm)

Central body in black finish with treated metal escutcheon.

Finishes:

BR bronze CR chrome OT brass PV gold PVD coating
AA anodized silver CS satin chrome



94.348XX

STRIKER PLATE FOR X MODE M2.0

(356 x 35 mm)

CENTRE DISTANCE VARIANT: 94348/28/37

In nickel-plated steel.



99.144

GROMMET FOR ARMoured DOORS

In steel painted black.



99.648

INCREASED INTENSITY MAGNET FOR X MODE M2.0 LOCK SENSOR

Magnet with black resin support.



99.683

**NETWORK ADAPTOR (Assembly on DIN EN 60715 guide)
TRANSFORMER + CHARGER**

Input 230 V A.C.
output 12V dc. - 24 VA max.
(to combine with cable 99.697)

Dimensions: mm 142x110x62



99.684

REMOTE CONTROL (Assembly on DIN EN 60715 guide)

Converts a clean contact signal to an encrypted signal.
Suitable for connection to a staircase landing button, home automation systems, alarm systems, etc ...

(to combine with cable 99702)

Dimensions: mm 142x110x62



99.697

BOARD-ADAPTOR CONNECTION CABLE

(for use with item 99.683)

Cable length: approx 4000 mm.



99.698

BOARD-INTERNAL ESCUTCHEON CONNECTION CABLE

Cable length: approx 1000 mm.



99.699

BOARD-EXTERNAL ESCUTCHEON CONNECTION CABLE

Cable length: approx 1000 mm.



99.700

LOCK-BOARD CONNECTION CABLE

(only for versions with electronic board external to lock)

Cable length: approx 1000 mm.



99.701

EXTERNAL PERIPHERAL-BOARD CONNECTION CABLE (for example, to buttons, card readers, print readers, etc..) VIA CLEAN CONTACT

Cable length: approx. 4000 mm



99.702

BOARD-REMOTE CONTROL CONNECTION CABLE

(for use with item 99.684)

Cable length: approx 4000 mm.



99.703

TUBULAR WIRED BATTERY HOLDER

(9V 6 TYPE D BATTERIES not supplied)

Cable length: approx 1800 mm.



99.704

DRAWER BATTERY HOLDER, WIRED

(9V 6 TYPE D BATTERIES not supplied)

Cable length: approx 1800 mm.



99.711

BATTERY CHARGER FOR 6 RECHARGEABLE BATTERIES

NiMH TYPE D 2200 mAh.

99.712

BOARD-BATTERY CHARGER CONNECTION CABLE

Cable length: approx 1000 mm.

Available from June 2014

**99.691****PROTECTED DUPLICATION CARD WITH TRANSPONDER**

(not provided with lock)

Quantities provided vary according to need.

**99.692****PROTECTED DUPLICATION TRANSPONDER KEY**

(not provided with lock)

Quantities provided vary according to need.

**99.693****PROTECTED DUPLICATION TRANSPONDER KEY**

(not provided with lock)

Quantities provided vary according to need.

Duplicates of this key are produced by Mottura Serrature di Sicurezza S.p.A., through the Mottura Clubs.





99.705

FREE DUPLICATION CARD WITH TRANSPONDER

(not provided with lock)

Quantities provided vary according to need.



99.706

FREE DUPLICATION TRANSPONDER KEY

(not provided with lock)

Quantities provided vary according to need.



99.707

FREE DUPLICATION TRANSPONDER KEY

(not provided with lock)

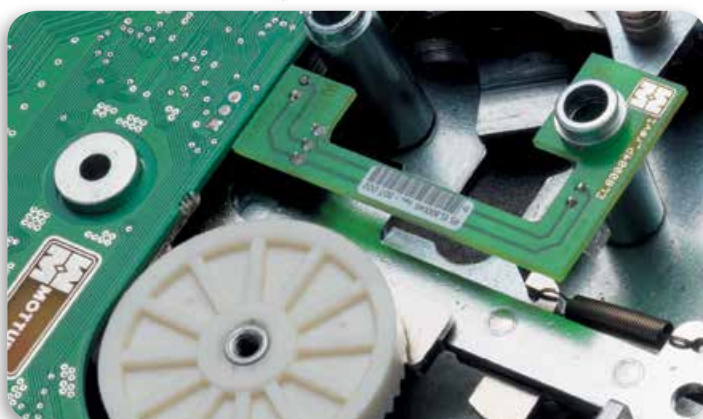
Quantities provided vary according to need.


SOLUTIONS AVAILABLE ON REQUEST



A version with external electrics is available on request.

For availability and costs, contact the company.



On request, locks may be supplied with:
anti-burglary cylinder extraction protection -
mechanical and electronic. **T** 
The electronic sensor (patented by Mottura) to
avoid false moves in the absence of the cylinder.

CLASSIFICATION

The tests carried out on the X MODE lock in accordance with regulation EN 14846:08 determine that it be classified as follows :

3	S	8	NPD	0	M	7	1	3
---	---	---	-----	---	---	---	---	---

Category of use

3 = for use in public places with high frequency of use, subject to damage by users

Durability

S = 200,000 opening and locking cycles with 50 N pre-load on bolt

Door weight and closing force

8 = up to 200 kg door weight

For use on smoke or fire-proof doors

NPD = function not specified

Safety for people

0 = not provided

Resistance to corrosion and extreme temperatures

M = very high resistance to corrosion and to extreme temperatures (from -25° to +70°)

Security for property

7 = very high resistance to burglary attempts including drilling

Electrical security

1 = door status

Protection against electrical manipulation

3 = high protection against voltage drops, cutting of electrical wires, electromagnetic manipulation, electrostatic discharge, electrostatic manipulation and the effects of cutting the electrical wires

EXAMPLE OF XMODE M2.0 LOCK ORDER

RIM LOCK VERSION WITH MAINS POWER AND FREE DUPLICATION KEYS, CENTRE DISTANCE 28.

49M01W8000 x 1 (lock, escutcheon wiring, magnet)
996850T x 1 (internal escutcheon)
996870T x 1 (external escutcheon with transponder) or 996860T x 1 (external escutcheon with keypad)
99683 x 1 (power adaptor)
99705 x 3 (card) or 99706 x 3 (transponder keys) or 99707 x 3 (transponder keys + integrated cylinder key).
99697 x 1 (lock-adaptor connection cable)

MORTISE-TYPE VERSION WITH BATTERY POWER AND FREE DUPLICATION KEY, CENTRE DISTANCE 28.

49M21W8000 x 1 (lock, escutcheon wiring, magnet)
996850T x 1 (internal escutcheon)
996870T x 1 (external escutcheon with transponder) or 996860T x 1 (external escutcheon with keypad)
99704 x 1 (battery holder drawer)
99705 x 3 (card) or 99706 x 3 (transponder keys) or 99707 x 3 (transponder keys + integrated cylinder key).
94348 x 1 (striker plate)

RIM LOCK VERSION WITH MAINS POWER AND PROTECTED DUPLICATION KEYS, CENTRE DISTANCE 37.

49M03W7000 x 1 (lock, escutcheon wiring, magnet + system card)
996850T x 1 (internal escutcheon)
996870T x 1 (external escutcheon with transponder) or 996860T x 1 (external escutcheon with keypad)
99683 x 1 (power adaptor)
99691 x 3 (card) or 99692 x 3 (transponder keys) or 99693 x 3 (transponder keys + integrated cylinder key).
99697 x 1 (lock-adaptor connection cable)

RIM LOCK VERSION WITH BATTERY POWER AND PROTECTED DUPLICATION KEYS, CENTRE DISTANCE 28.

49M03W8000 x 1 (lock, escutcheon wiring, magnet + system card)
996850T x 1 (internal escutcheon)
996870T x 1 (external escutcheon with transponder) or 996860T x 1 (external escutcheon with keypad)
99704 x 1 (battery holder drawer)
99691 x 3 (card) or 99692 x 3 (transponder keys) or 99693 x 3 (transponder keys + integrated cylinder key).

To assist you in choosing your lock and accessories, an electronic configurator is available on the website at www.mottura.it



SEMI-AUTOMATIC LOCK M2.0



push-button escutcheon

The semi-automatic X MODE M2.0 is a solution that is particularly well suited to installations where automatic locking of the door is required both from the inside and the outside, simply by closing the door, without the use of electronic keys.

The cylinder serves to open the door from the outside.

From the inside, the door is opened by pressing the button, or with the cylinder.

When the door is pulled closed, the lock engages automatically.



49.A00W8/7...

X MODE M 2.0 FOR REVERSIBLE RIM LOCKS

Lock with battery function

Complete with electronic board inside lock

Bolt centre distances in mm 28 (49A00W8...) /37 (49A00W7...)


Pack:

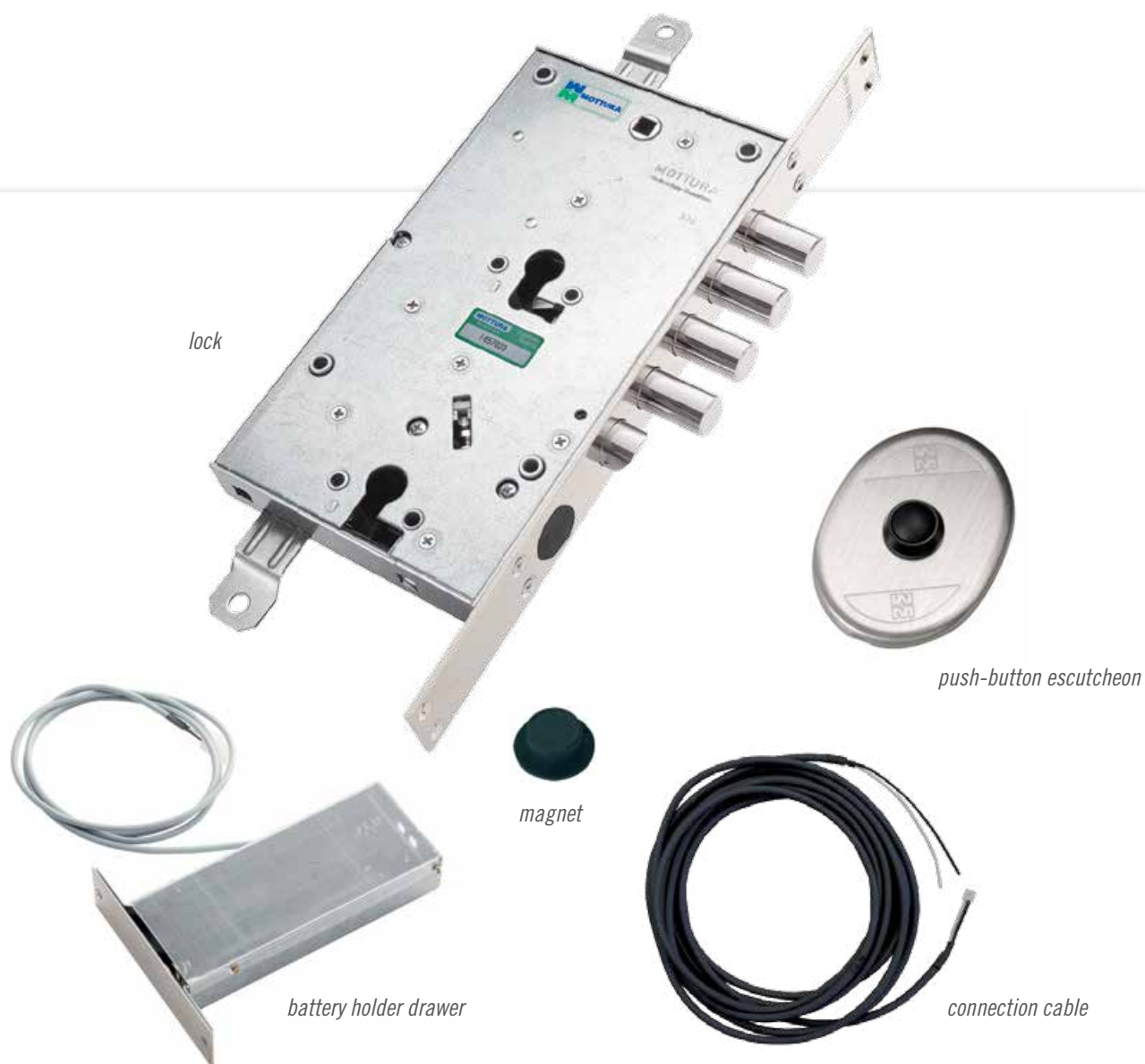
complete kit composed of: 1 rim lock, 1 drawer battery holder, 1 push-button escutcheon, 1 lock-button connection cable (cable length: approx 4000 mm), 1 magnet with increased intensity

Finishes:

BR bronze CR chrome OT brass PV gold PVD coating AA anodised silver CS satin chrome

On request, the lock can be supplied with the mechanical and electrical anti-burglary locking system (extraction of cylinder).

The electronic sensor (patented by Mottura) to avoid false moves in the absence of the cylinder. 



49.A20W8/7...

X MODE M2.0 FOR REVERSIBLE MORTISE-TYPE LOCKS

Lock with battery function

Complete with electronic board inside lock

Bolt centre distances in mm 28 (49A20W8...) / 37 (49A20W7...)

Pack:

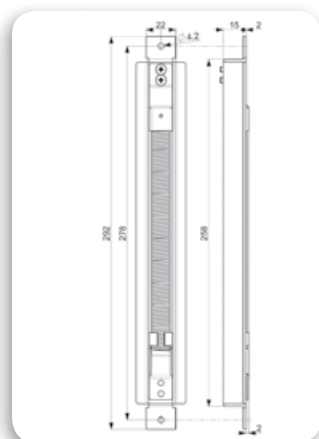
complete kit composed of: 1 lock to be inserted, 1 drawer battery holder, 1 push-button escutcheon, 1 lock-button connection cable (cable length: approx 4000 mm), 1 magnet with increased intensity

Finishes:

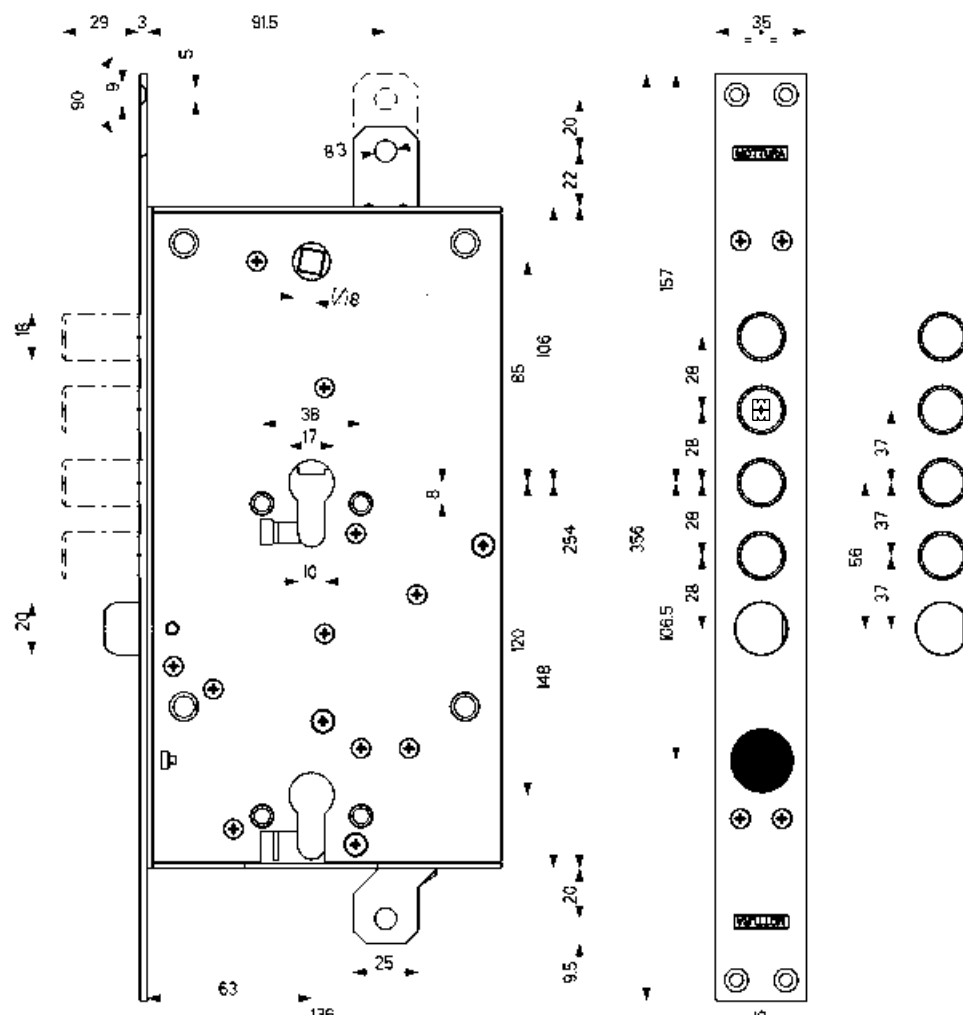
BR bronze CR chrome OT brass PV gold PVD coating AA anodised silver CS satin chrome

On request, the lock can be supplied with the mechanical and electrical anti-burglary locking system (extraction of cylinder). The electronic sensor (patented by Mottura) to avoid false moves in the absence of the cylinder. **TA**

RIM LOCK VERSION



MORTISE VERSION



MOTTURA designs and produces high quality SECURITY components and boasts a 360 degree range of products: motorised, mechatronic and mechanical locks, cylinders, safes and panic bars to guarantee the protection of residential, commercial and industrial areas.

MOTTURA is synonymous with SECURITY and RELIABILITY and produces products which are at the cutting edge of performance and which comply with the most rigorous current standards.

MOTTURA exports SECURITY to over sixty countries across five continents.



MOTTURA guarantees the SECURITY of its customers by providing key duplication protection which is managed by the MOTTURA CLUB, distinctive service points that can be contacted for assistance.

Efficient service and customer care are our main priorities!

MOTTURA, always providing SECURITY.



safeguarding your security

Mottura Serrature di Sicurezza S.p.A.

Strada Antica di Francia, 34
10057 Sant'Ambrogio (Torino) Italia

www.mottura.it



P190438ENG a_012729

84056530063239